

forster
thermfix
light

forster

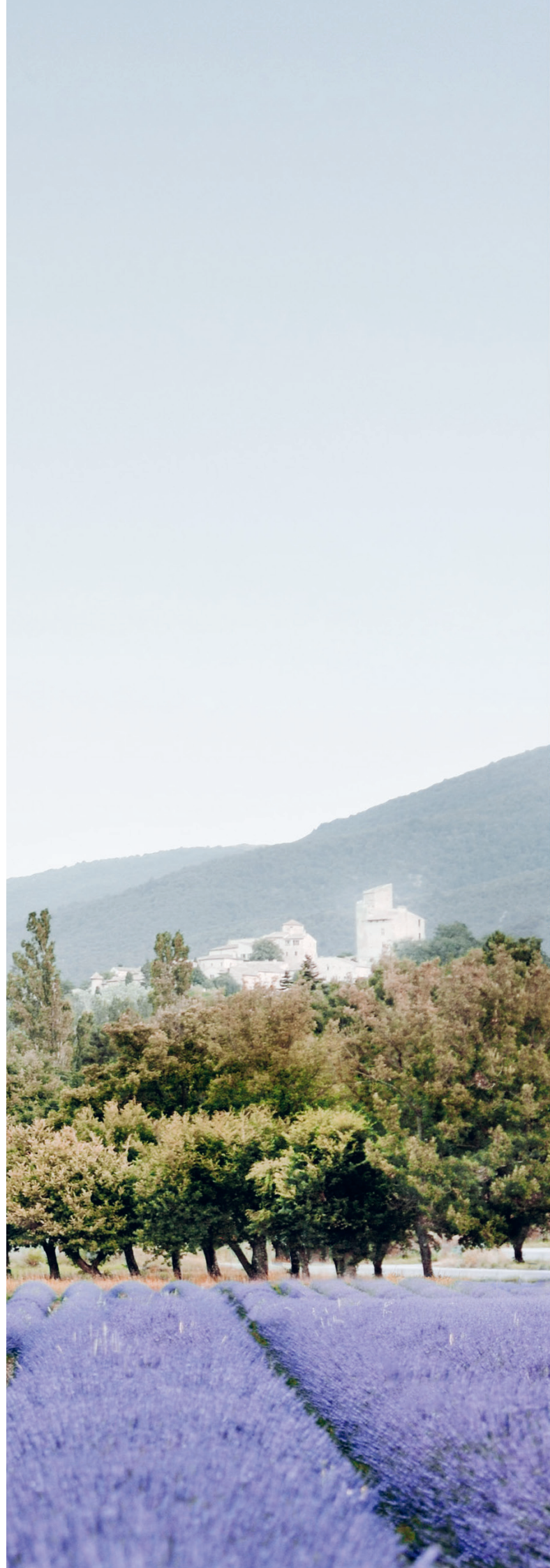
forster thermfix light

Thermally insulated curtain walls

Whether as a curtain wall or sloped/horizontal glazing, the forster thermfix light attachment facade system offers planners and architects a high degree of freedom of design thanks to the free selection of the substructure. The system allows for the uncomplicated attachment of a sealing system on commercially available steel and aluminium profiles, and wooden constructions.

As sloped or horizontal glazing, the product is also tested for fire protection up to EI60.

Ideal combination elements can be found in the forster unico, unico xs and omnia profile systems, for example, for thermally insulated windows and doors.





forster thermfix vario light

Vertical attachment facade system

With the forster thermfix light system, a sealing system can be attached to commercially available steel and aluminium profiles and to wooden constructions in no time at all. This particularly economic solution offers a high degree of freedom of design and can be combined with the forster presto, unico and omnia standard doors and windows.

Your benefits

- Good heat insulation
- Filigree design
- Very economical

Technical specifications

Material variants

Available as CO₂-reduced low carbon emission steel
Attachment profile in galvanised steel standard

Attachment profile in aluminium

Substructure in steel, aluminium or wood

Face widths

Mullion/transom profile in 50 mm

Dimensions

Fixed glazing (W×H):

Unlimited × across floors, depending on static requirements

System features

Design variants:

Curtain wall or inner partition

Cover strips in aluminium and stainless steel

Max. filling element thickness 60 mm

Max. filling weight 450 kg

Dry glazing

Performance characteristics*

CE/UKCA marking according to EN 13830

Environmental Product Declaration (EPD) according to ISO 14025 and EN 15804

Heat insulation on mullion/transom:

U_f value up to 1.00 W/(m² K)

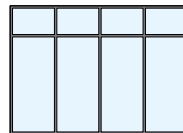
Resistance to wind loads:

3 kN/m² according to EN 12179, safety load 4.5 kN/m²

Watertightness: Class R7 (600 Pa) according to EN 12155

Air permeability: Class AE (>600 Pa) according to EN 12153

Impact resistance: Class I5/E5 according to EN 14019



* Take note of the country-specific approvals and requirements



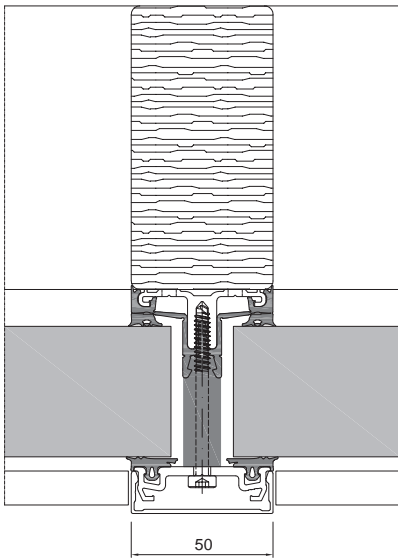

 Low carbon
 emission steel


 EPD

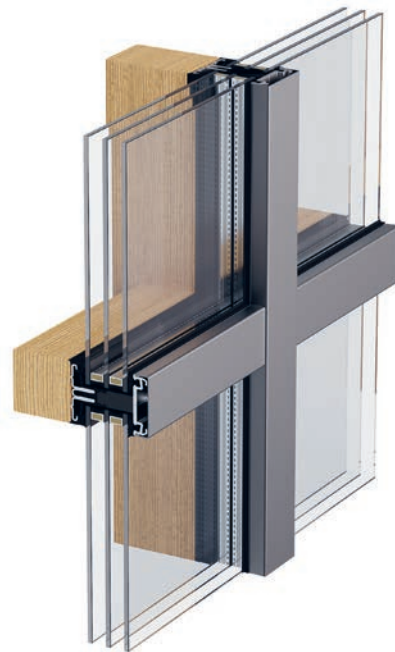

 Insulation


 Slim
 profiles


 Eco-
 nomical



Transom



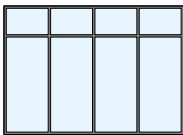
forster thermfix light

Attachment facade system for sloped glazing

The insulated attachment facade system for sloped and horizontal glazing with fire protection requirements in the exterior, forster thermfix light enables a sealing system to be applied to commercially available steel profiles without any problems. The system is characterised by simple and quick processing and therefore by being very economical. It also impresses with its extremely filigree design of 50 mm face width. It also offers planners and architects a large degree of freedom of design thanks to the free choice of substructure.

Your benefits

- Heat insulation
- Fire protection
- Cover strips optionally made from stainless steel



Technical specifications

Material variants

Available as CO₂-reduced low carbon emission steel
Attachment profile in galvanised steel standard

Substructure in steel

Face widths

Mullion/transom profile in 50 mm

Dimensions

Horizontal glazing (W×H):

Unlimited × 3980 mm, slope 0° – 15°

Sloped glazing (W×H):

unlimited × 4009 mm, slope 16° – 80°

System features

Design variants:

Sloped/horizontal glazing

Cover strips in aluminium and stainless steel

Max. filling element thickness 60 mm

Max. filling weight 450 kg

Dry glazing

Performance characteristics*

CE/UKCA marking according to EN 13830

Environmental Product Declaration (EPD) according to ISO 14025 and EN 15804

Heat insulation on mullion/transom:

U_f value up to 1.00 W/(m² K)

Fire protection:

E30/EI30/EI60 according to EN 1634-1

Resistance to wind loads:

Based on EN 12179, 2500 Pa, safety load 3600 Pa

Watertightness: Class RE (1200 Pa) based on EN 12155

Air permeability: Class AE (1200 Pa) based on EN 12153

* Take note of the country-specific approvals and requirements



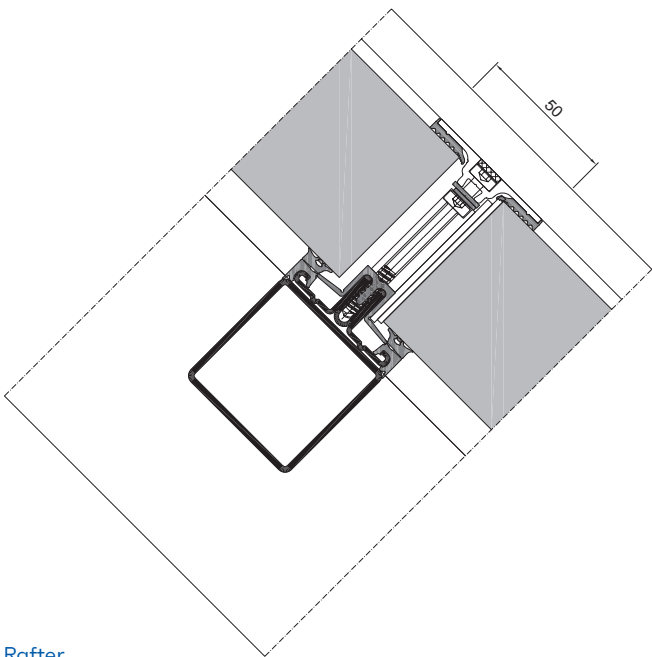

Low carbon
emission steel


EPD


Insulation


Fire
resistance


Eco-
nomical



Rafter

Steel is our nature.

For us, steel is a matter of the heart. We develop long-lasting systems for attractive and energy-efficient architecture.

Forster Profile Systems develops and manufactures safe, energy-efficient solutions in steel and stainless steel for doors, windows and facades in Switzerland. Forster works with its own branches in over 20 countries – and exclusive sales partners in around 10 more. In-house consultants are on hand to assist our customers at sites ranging from Europe and the Middle East to Asia and North America. Forster systems are used for building shells and interiors. This includes market-leading solutions that meet

the strictest requirements and standards in terms of thermal insulation, plus safety applications such as fire protection, burglar resistance and bullet resistance. The product range is rounded off by matching accessories. Our customers and business partners in architecture, planning and construction can also count on comprehensive services for their respective industry.

Forster Profilsysteme AG | CH-8590 Romanshorn
info@forstersystems.com | forstersystems.com

forster